

**DWC ROUTE INBOUND**

WAYPOINT	LEG	LAT	LONG	T Co.	Dist (Nm)	PLANNED SPEED (KTS)	SPEED LIMIT (KTS)	RADIUS (NM)	CORRIDOR PORT (m)	CORRIDOR STBD (m)	NOTE
PS 2		39°24.500'S	176°59.400'E								
Yellow B	1	39°26.428'S	176°55.081'E	240.0	3.90	12.0	16.0	0.50	200	200	Pilot boards at 8 - 10 knots PI - Yellow Buoy: 0.16 Port PI - B Buoy: 0.46 Port PI - A Buoy: 0.05 STBD PI - BrkW: 0.14 Port PI - BrkW: 0.06 Port
Hardinge	2	39°27.160'S	176°54.638'E	205.0	0.81	10.0	12.0	0.50	100	100	
A Buoy DWC	3	39°27.727'S	176°54.600'E	183.0	0.57	8.0	11.0	0.50	100	100	
BrkW	4	39°28.255'S	176°54.745'E	168.0	0.54	6.0	8.0	0.30	80	80	
Inner Lt	5	39°28.341'S	176°55.041'E	110.6	0.24	4.0	5.0	-	60	60	

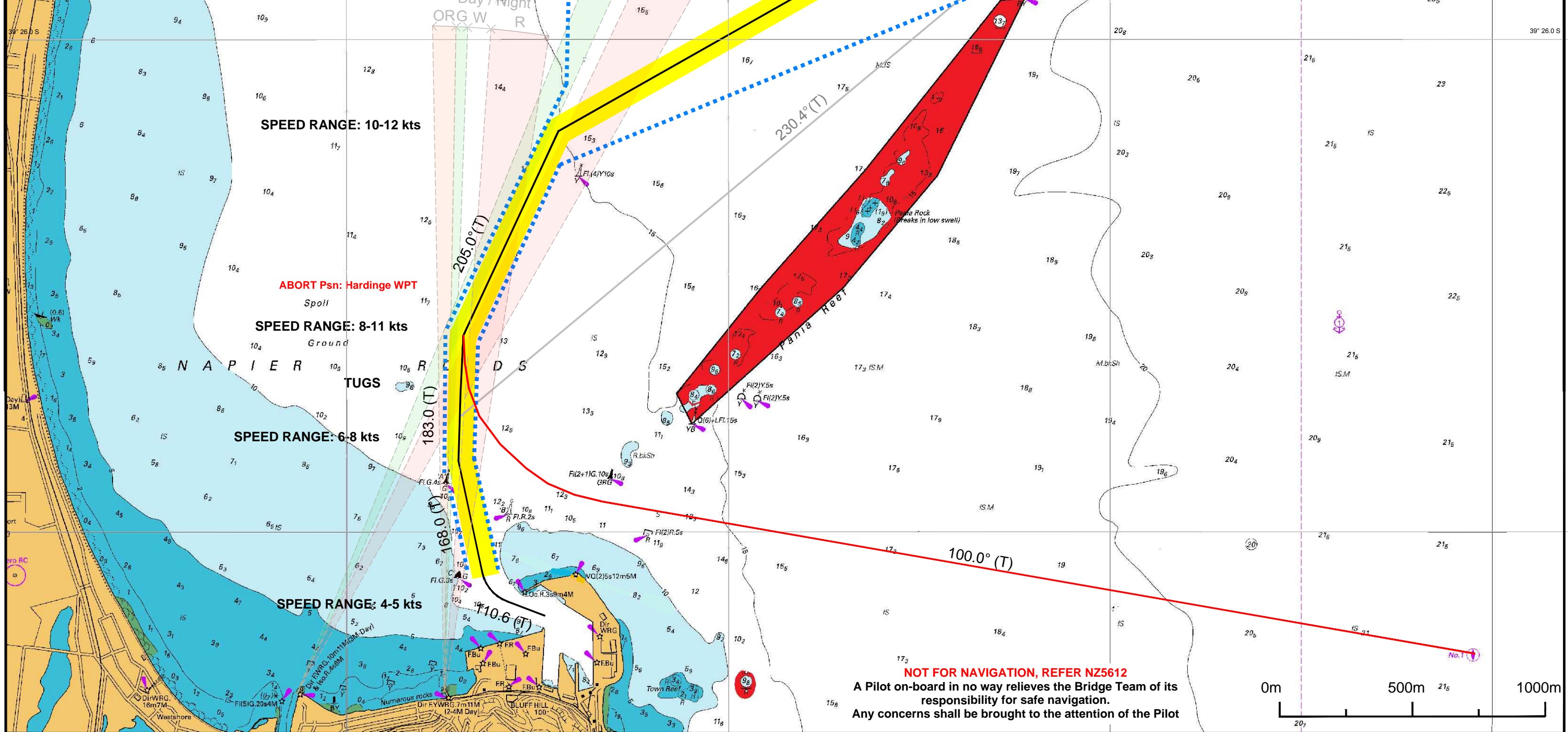
**6.06**

**DWC ABORT TO SOUTH CHANNEL**

WAYPOINT	LEG	LAT	LONG	T Co.	Dist (Nm)	PLANNED SPEED (KTS)	SPEED LIMIT (KTS)	RADIUS (NM)	CORRIDOR PORT (m)	CORRIDOR STBD (m)	NOTE
Hardinge		39°27.160'S	176°54.638'E								
DWC A Buoy Abort	1	39°27.646'S	176°54.819'E	164.0	0.51	8.0	11.0	0.50	100	100	Abort Psn - Hardinge WPT
Mid Channel Abort	2	39°27.885'S	176°55.400'E	118.0	0.51	8.0	11.0	1.00	100	100	
PS 1	3	39°28.500'S	176°59.900'E	100.0	3.50	12.0	16.0	-	100	100	PI - North BrkW: 0.3 STBD

**NAPIER PORT**

**SAFETY CONTOUR SHOWN IS 10.0m**



**NOT FOR NAVIGATION, REFER NZ5612**  
 A Pilot on-board in no way relieves the Bridge Team of its responsibility for safe navigation.  
 Any concerns shall be brought to the attention of the Pilot