

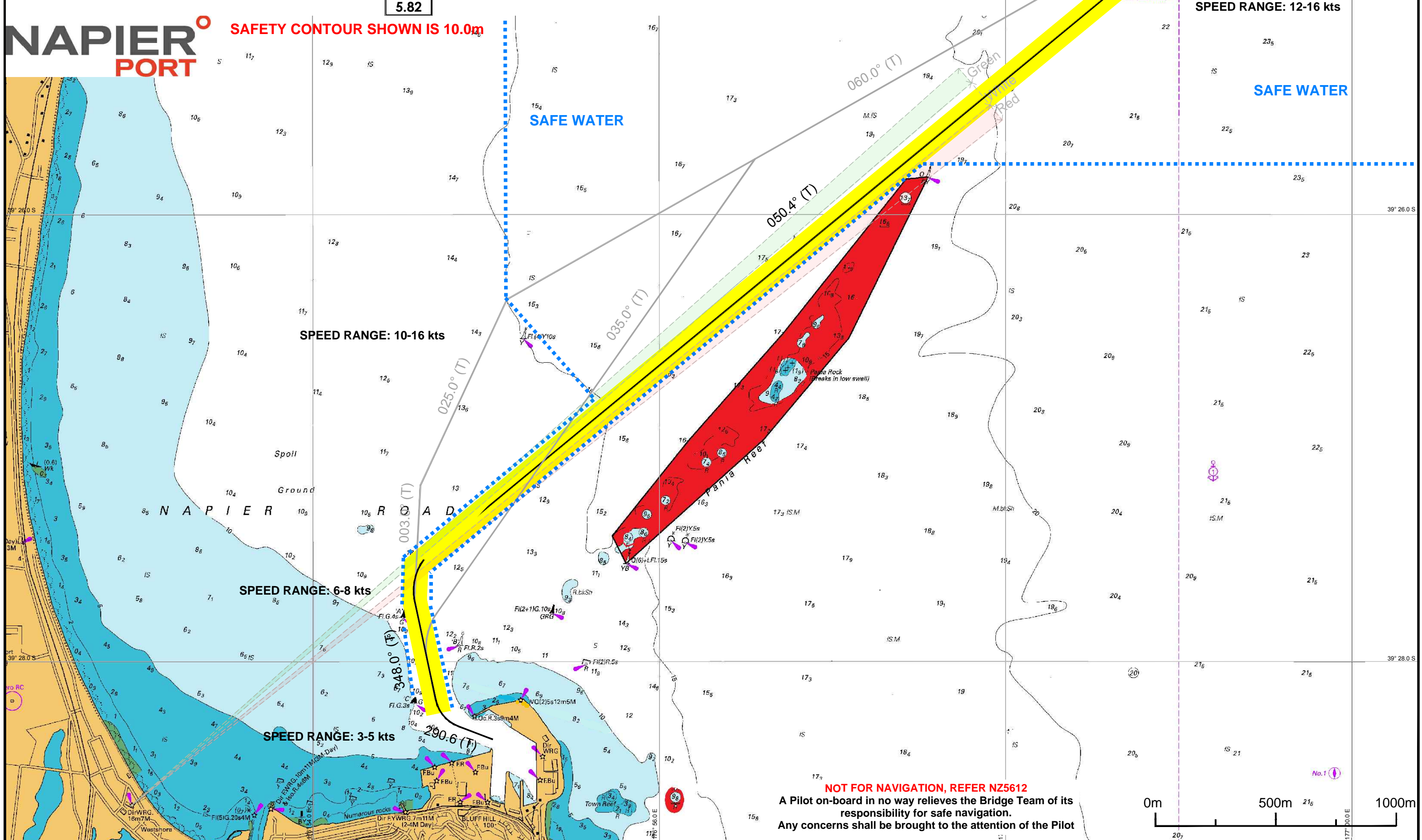
JOSCO ROUTE OUTBOUND

WAYPOINT	LEG	LAT	LONG	T Co.	Dist (Nm)	PLANNED SPEED (KTS)	SPEED LIMIT (KTS)	RADIUS (NM)	CORRIDOR P (m)	CORRIDOR S (m)	NOTE
Inner Lt BrkW	1	39°28.341'S	176°55.041'E	290.6	0.24	3.0	5.0	0.30	60	60	PI - BrkW: 0.06 STBD
Josco A Buoy	2	39°27.592'S	176°54.562'E	348.0	0.68	6.0	8.0	0.40	80	80	PI - BrkW: 0.14 STBD
Yellow Buoy Josco PS2	3	39°26.857'S	176°55.713'E	050.4	1.20	10.0	16.0	-	100	100	PI - North Pania: 0.12 STBD
	4	39°24.500'S	176°59.400'E	050.4	3.70	12.0	16.0	-	100	100	Pilot disembarks at 8 - 10 kts

5.82

NAPIER PORT

SAFETY CONTOUR SHOWN IS 10.0m



NOT FOR NAVIGATION, REFER NZ5612
 A Pilot on-board in no way relieves the Bridge Team of its responsibility for safe navigation.
 Any concerns shall be brought to the attention of the Pilot