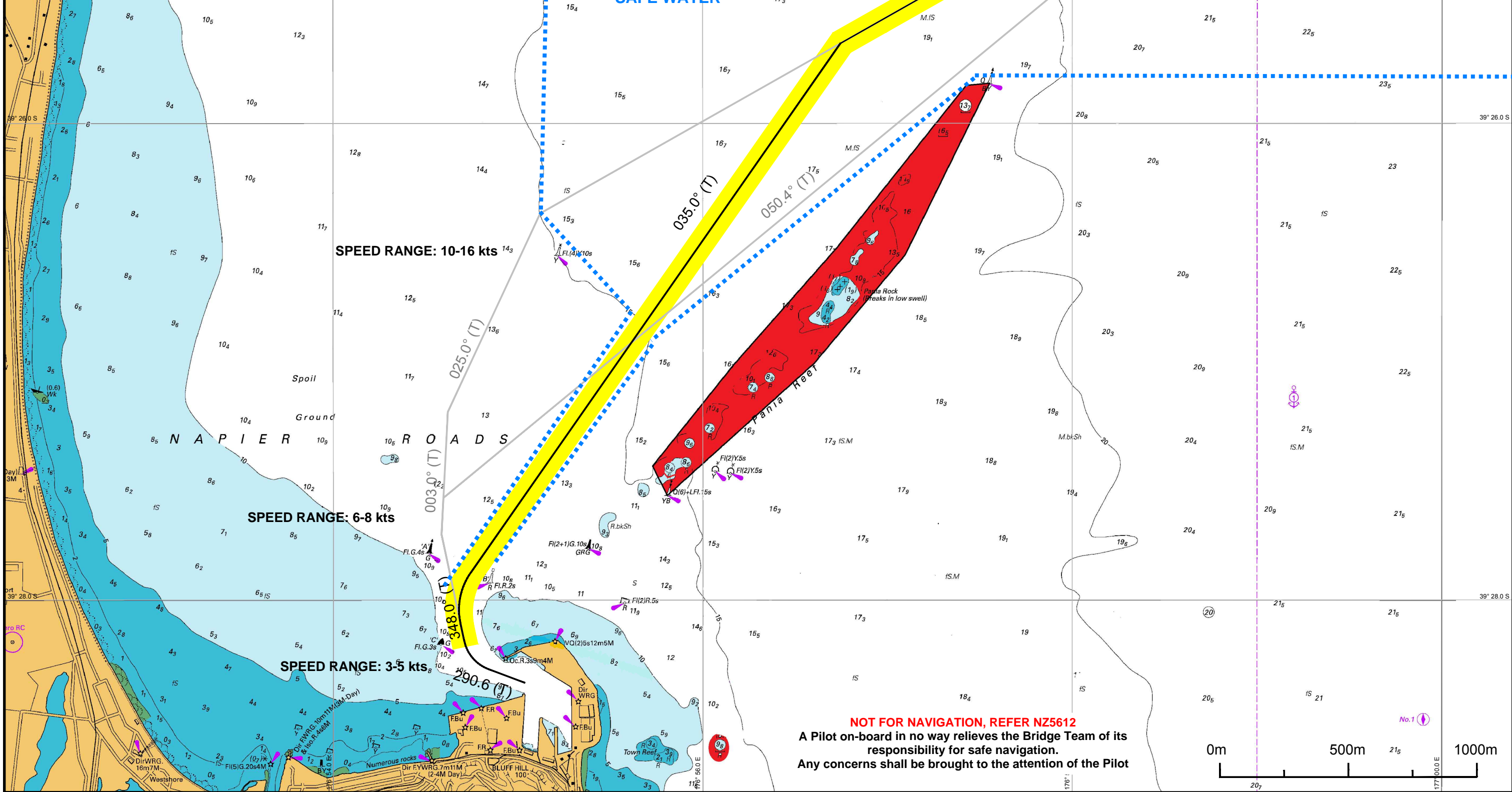


**035 OUTBOUND**

WAYPOINT	LEG	LAT	LONG	T Co.	Dist (Nm)	PLANNED SPEED (KTS)	SPEED LIMIT (KTS)	RADIUS (NM)	CORRIDOR PORT (m)	CORRIDOR STBD (m)	NOTE
Inner Lt		39°28.341'S	176°55.041'E		290.6	0.24	3.0	5.0	0.30	60	PI - BrkW: 0.06 STBD
BrkW	1	39°28.255'S	176°54.745'E		348.0	0.39	6.0	8.0	0.50	80	PI - BrkW: 0.14 STBD
B Buoy	2	39°27.871'S	176°54.639'E		035.0	1.30	10.0	16.0	-	100	PI - Yellow Buoy: 0.39 Port
Yellow Buoy 035	3	39°26.790'S	176°55.619'E		035.0	1.20	12.0	16.0	1.00	200	
N Buoy	4	39°25.775'S	176°56.540'E		060.0	2.60	12.0	16.0	-	200	PI - North Pania: 0.45 STBD
PS 2	5	39°24.500'S	176°59.400'E								Pilot disembarks at 8 - 10 kts

**NAPIER PORT**

**SAFETY CONTOUR SHOWN IS 10.0m**



**NOT FOR NAVIGATION, REFER NZ5612**  
 A Pilot on-board in no way relieves the Bridge Team of its responsibility for safe navigation.  
 Any concerns shall be brought to the attention of the Pilot

**SPEED RANGE: 12-16 kts**

**SAFE WATER**

**SPEED RANGE: 10-16 kts**

**SPEED RANGE: 6-8 kts**

**SPEED RANGE: 3-5 kts**

