

SOUTH CHANNEL INBOUND

WAYPOINT	LEG	LAT	LONG	T Co.	Dist (Nm)	PLANNED SPEED (KTS)	SPEED LIMIT (KTS)	RADIUS (NM)	CORRIDOR PORT (m)	CORRIDOR STBD (m)	NOTE
PS 1		39°28.500'S	176°59.900'E								
Mid Channel	1	39°27.879'S	176°55.360'E	280.0	3.60	10.0	16.0	0.50	100.0	100.0	Pilot boards at 8 - 10 knots PI - North BrkW: 0.3 Port
A Buoy South	2	39°27.721'S	176°54.598'E	285.0	0.61	8.0	11.0	0.20	100.0	100.0	
BrkW	3	39°28.255'S	176°54.745'E	168.0	0.55	6.0	8.0	0.30	80.0	80.0	PI - BrkW: 0.14 Port
Inner Lt	4	39°28.341'S	176°55.041'E	110.6	0.24	4.0	5.0	-	60.0	60.0	PI - BrkW: 0.06 Port

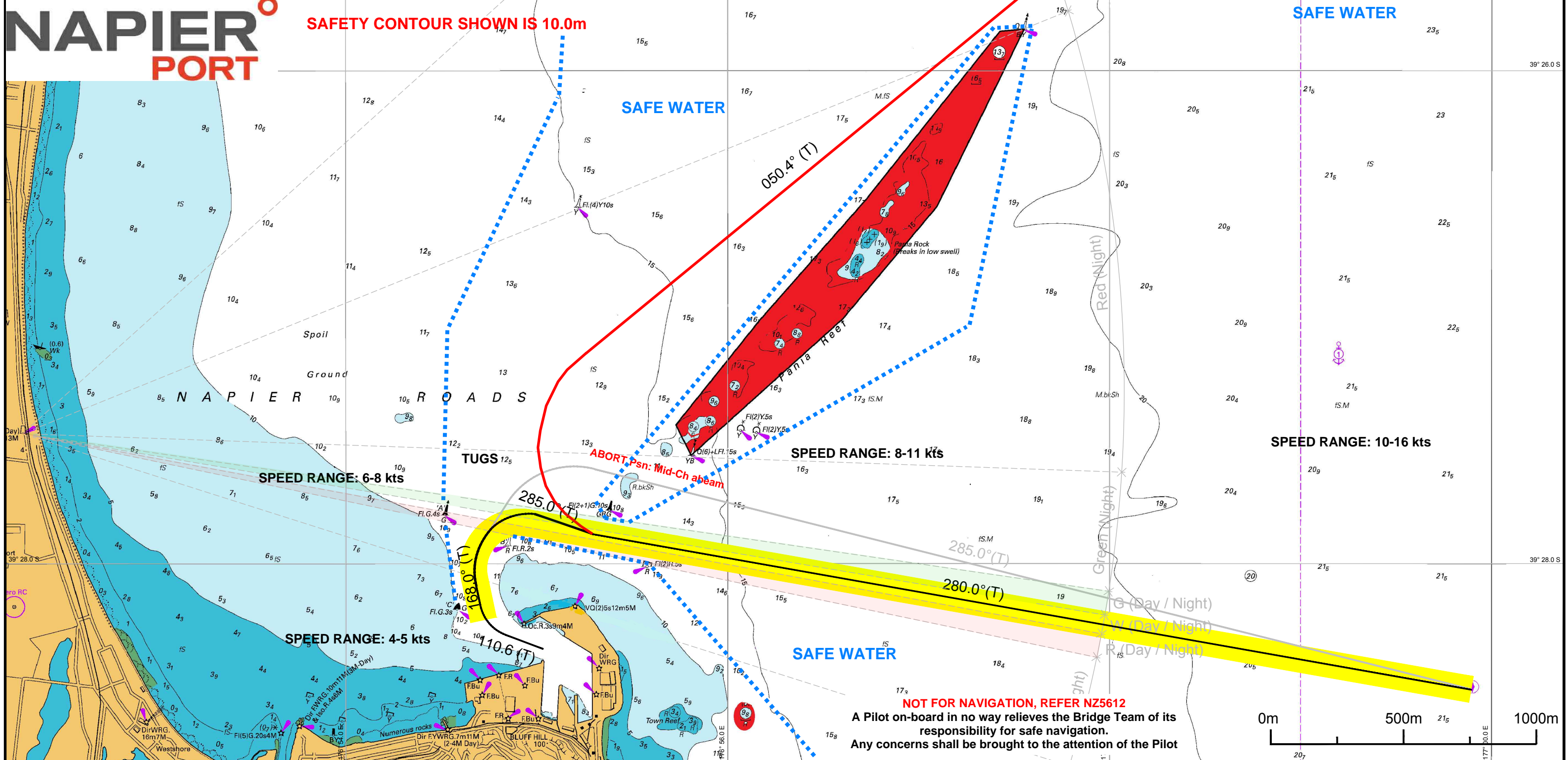
5.00

SOUTH CHANNEL ABORT TO JOSCO

WAYPOINT	LEG	LAT	LONG	T Co.	Dist (Nm)	PLANNED SPEED (KTS)	SPEED LIMIT (KTS)	RADIUS (NM)	CORRIDOR PORT (m)	CORRIDOR STBD (m)	NOTE
Mid Channel Abort		39°27.885'S	176°55.400'E					0.50			Abort Psn: Mid-Ch abeam
A Buoy abort	1	39°27.536'S	176°54.650'E	301.1	0.68	8.0	11.00	0.35	100	100	
A Buoy brg 219 x 0.8	2	39°27.205'S	176°55.169'E	050.4	0.52	8.0	11.00	-	100	100	
Yellow Buoy Josco	3	39°26.857'S	176°55.713'E	050.4	0.55	10.0	16.00	-	100	100	PI - North Pania: 0.12 STBD
PS2	4	39°24.500'S	176°59.400'E	050.4	3.70	12.0	16.00	-	100	100	

NAPIER PORT

SAFETY CONTOUR SHOWN IS 10.0m



NOT FOR NAVIGATION, REFER NZ5612
 A Pilot on-board in no way relieves the Bridge Team of its responsibility for safe navigation.
 Any concerns shall be brought to the attention of the Pilot

