

SOUTH CHANNEL OUTBOUND

WAYPOINT	LEG	LAT	LONG	T Co.	Dist (Nm)	PLANNED SPEED (KTS)	SPEED LIMIT (KTS)	RADIUS (NM)	CORRIDOR PORT (m)	CORRIDOR STBD (m)	NOTE
Inner Lt BrkW	1	39°28.341'S	176°55.041'E	290.6	0.24	3.0	5.0	0.30	60.0	60.0	PI - BrkW: 0.06 STBD
A Buoy South	2	39°27.721'S	176°54.598'E	348.0	0.55	6.0	8.0	0.20	80.0	80.0	PI - BrkW: 0.14 STBD
Mid Channel	3	39°27.879'S	176°55.360'E	105.0	0.61	8.0	16.0	0.50	100.0	100.0	PI - North BrkW: 0.3 STBD
PS 1	4	39°28.500'S	176°59.900'E	100.0	3.60	12.0	16.0	-	100.0	100.0	

5.00

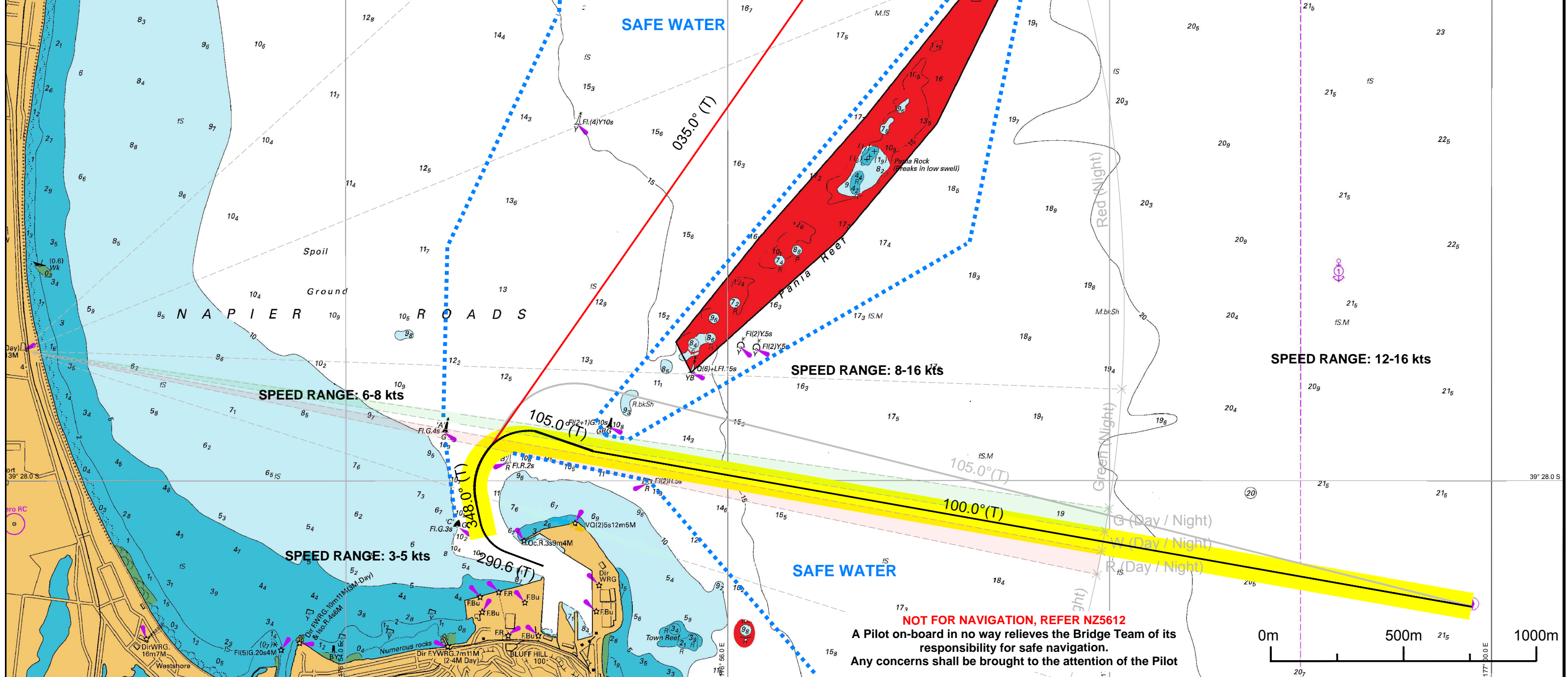
Pilot disembarks at 8 - 10 kts

SOUTH CHANNEL OUTBOUND ABORT TO 035

WAYPOINT	LEG	LAT	LONG	T Co.	Dist (Nm)	PLANNED SPEED (KTS)	SPEED LIMIT (KTS)	RADIUS (NM)	CORRIDOR PORT (m)	CORRIDOR STBD (m)	NOTE
Inner Lt BrkW	1	39°28.341'S	176°55.041'E	290.6	0.24	3.0	5.0	0.30	60.0	60.0	PI - BrkW: 0.06 STBD
B Buoy	2	39°27.871'S	176°54.639'E	348.0	0.39	6.0	8.0	0.50	80	80	PI - BrkW: 0.14 STBD
Yellow Buoy 035	3	39°26.790'S	176°55.619'E	035.0	1.30	10.0	16.0	-	100	100	PI - Yellow Buoy: 0.39 Port
N Buoy	4	39°25.775'S	176°56.540'E	035.0	1.20	12.0	16.0	1.00	200	200	PI - North Pania: 0.45 STBD
PS 2	5	39°24.500'S	176°59.400'E	060.0	2.60	12.0	16.0	-	200	200	

NAPIER PORT

SAFETY CONTOUR SHOWN IS 10.0m



NOT FOR NAVIGATION, REFER NZ5612
 A Pilot on-board in no way relieves the Bridge Team of its responsibility for safe navigation.
 Any concerns shall be brought to the attention of the Pilot