

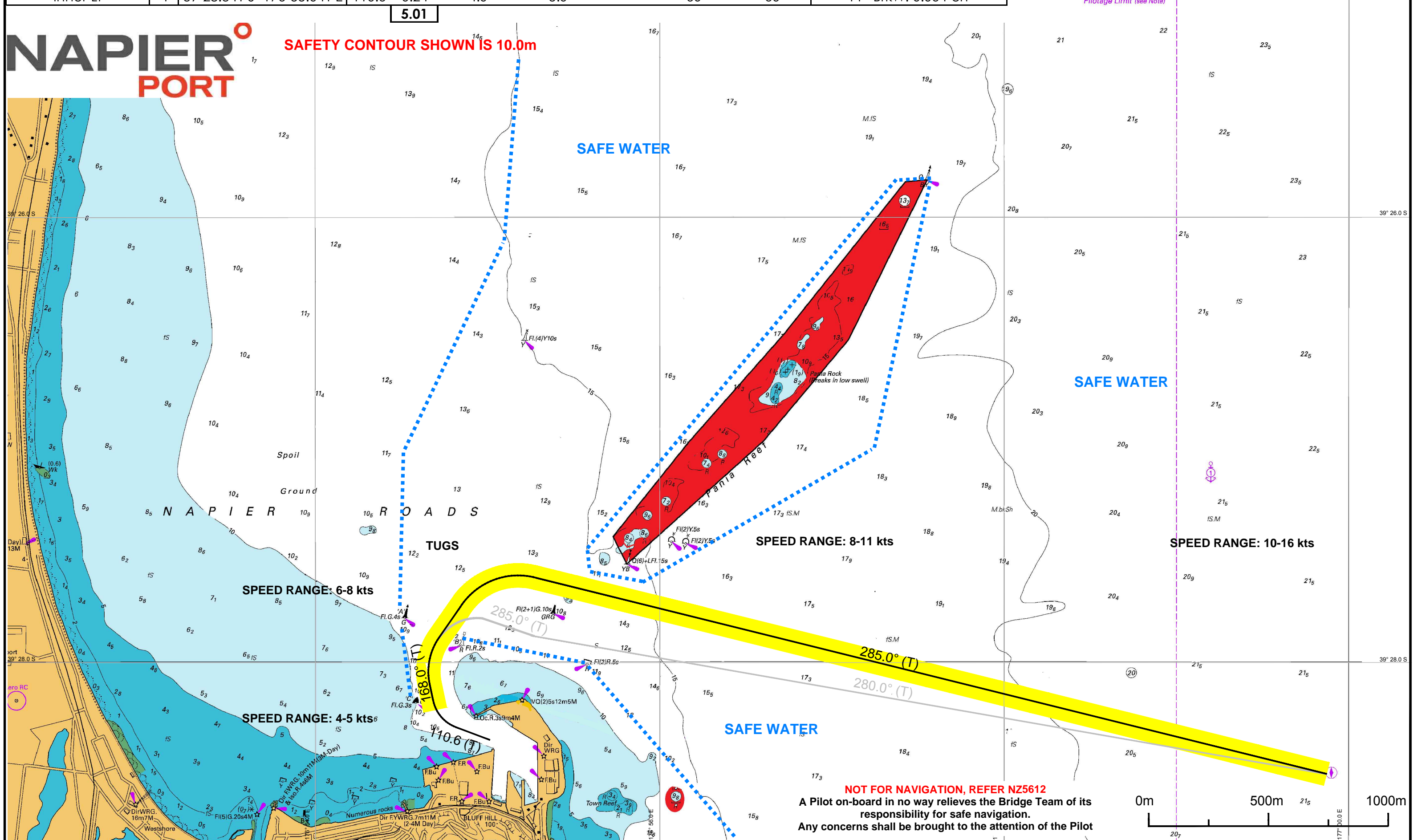
**SOUTH SECONDARY INBOUND (draft less than 7.5m)**

WAYPOINT	LEG	LAT	LONG	T Co.	Dist (Nm)	PLANNED SPEED (KTS)	SPEED LIMIT (KTS)	RADIUS (NM)	CORRIDOR PORT (m)	CORRIDOR STBD (m)	NOTE
PS 1		39°28.500'S	176°59.900'E								
Mid Channel SS	1	39°27.511'S	176°55.105'E	285.0	3.80	10.0	16.0	0.50	100	100	Pilot boards at 8 - 10 knots PI - North BrkW: 0.61 Port
A Buoy Sec	2	39°27.759'S	176°54.609'E	237.1	0.46	8.0	11.0	0.30	100	100	
BrkW	3	39°28.255'S	176°54.745'E	168.0	0.51	6.0	8.0	0.30	80	80	PI - BrkW: 0.14 Port
Inner Lt	4	39°28.341'S	176°55.041'E	110.6	0.24	4.0	5.0	-	60	60	PI - BrkW: 0.06 Port

**5.01**

# NAPIER PORT

**SAFETY CONTOUR SHOWN IS 10.0m**



**NOT FOR NAVIGATION, REFER NZ5612**  
 A Pilot on-board in no way relieves the Bridge Team of its responsibility for safe navigation.  
 Any concerns shall be brought to the attention of the Pilot