

**SOUTH SECONDARY OUTBOUND (draft less than 7.5m)**

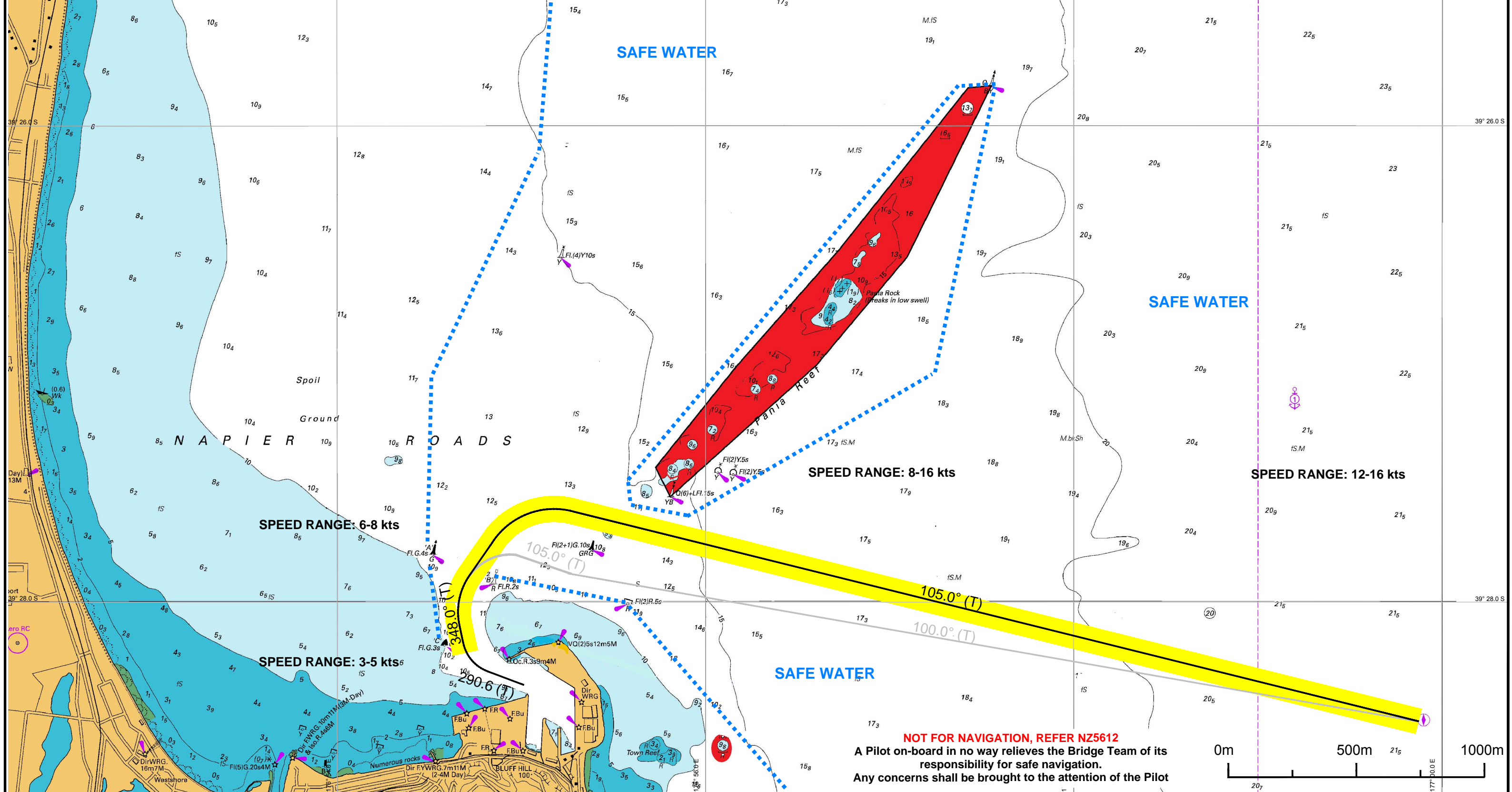
WAYPOINT	LEG	LAT	LONG	T Co.	Dist (Nm)	PLANNED SPEED (KTS)	SPEED LIMIT (KTS)	RADIUS (NM)	CORRIDOR PORT (m)	CORRIDOR STBD (m)	NOTE
Inner Lt BrkW	1	39°28.341'S	176°55.041'E	290.6	0.24	3.0	5.0	0.30	60	60	PI - BrkW: 0.06 STBD PI - BrkW: 0.14 STBD
A Buoy Sec	2	39°27.759'S	176°54.609'E	348.0	0.51	6.0	8.0	0.30	80	80	
Mid Channel SS	3	39°27.511'S	176°55.105'E	057.1	0.46	8.0	16.0	0.50	100	100	PI - North BrkW: 0.61 STBD
PS 1	4	39°28.500'S	176°59.900'E	105.0	3.80	12.0	16.0	-	100	100	

**5.01**

Pilot disembarks at 8 - 10 kts

# NAPIER PORT

**SAFETY CONTOUR SHOWN IS 10.0m**



**NOT FOR NAVIGATION, REFER NZ5612**  
 A Pilot on-board in no way relieves the Bridge Team of its responsibility for safe navigation.  
 Any concerns shall be brought to the attention of the Pilot